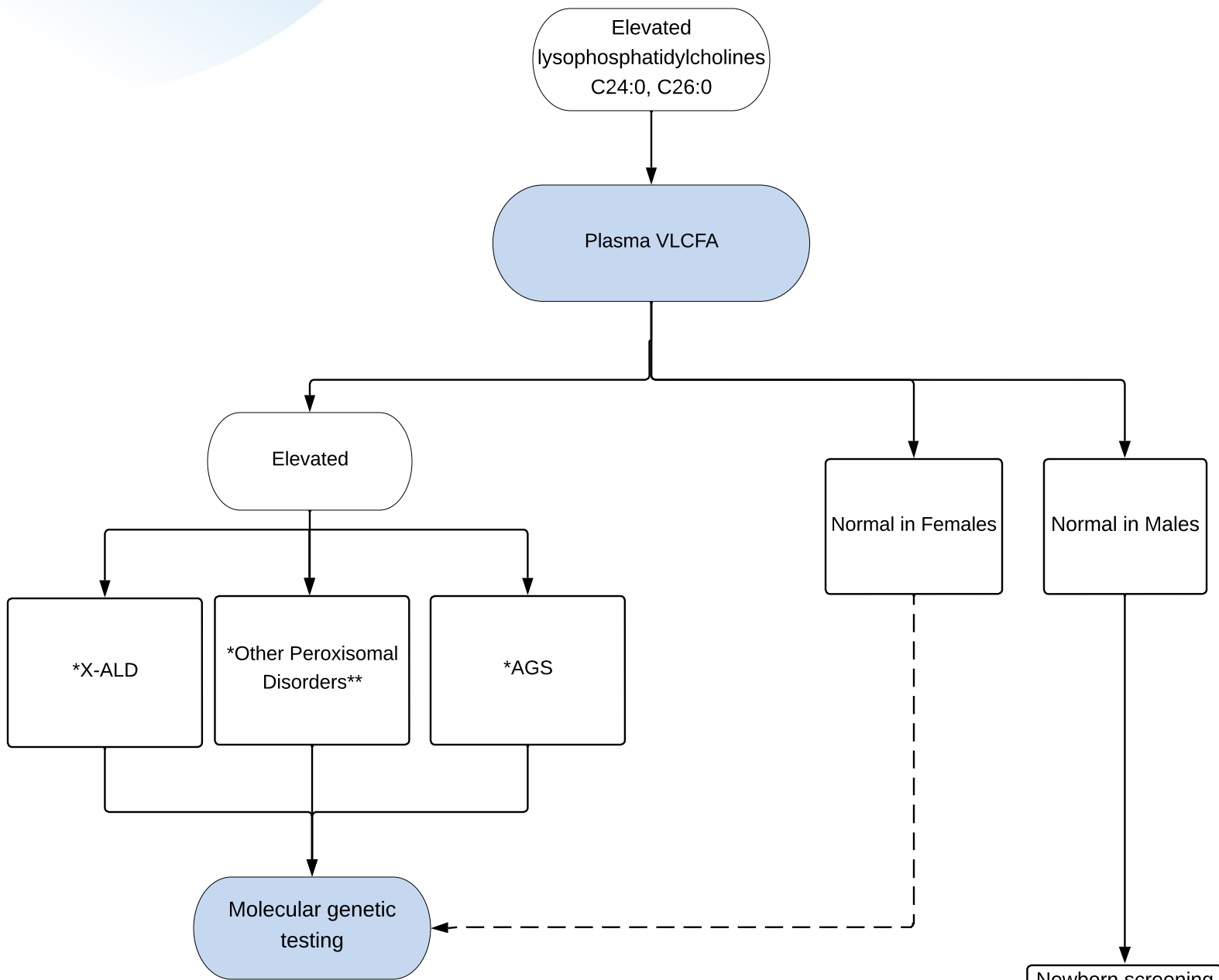


# X-ALD: Elevated lysophosphatidylcholines C24:0, C26:0



**Key:**

- Actions are shown in shaded ovals; results are in the unshaded ovals. Diagnostic outcomes are shown in boxes.
- Dashed line reflects an optional test to rule out carrier status.
- \*Based on VLCFA profile and on clinical presentation.
- \*\*Disorders of peroxisomal biogenesis and beta-oxidation.

**Abbreviations:**

AGS = Aicardi-Goutières syndrome  
 VLCFA = very long chain fatty acids  
 X-ALD = X-linked adrenoleukodystrophy