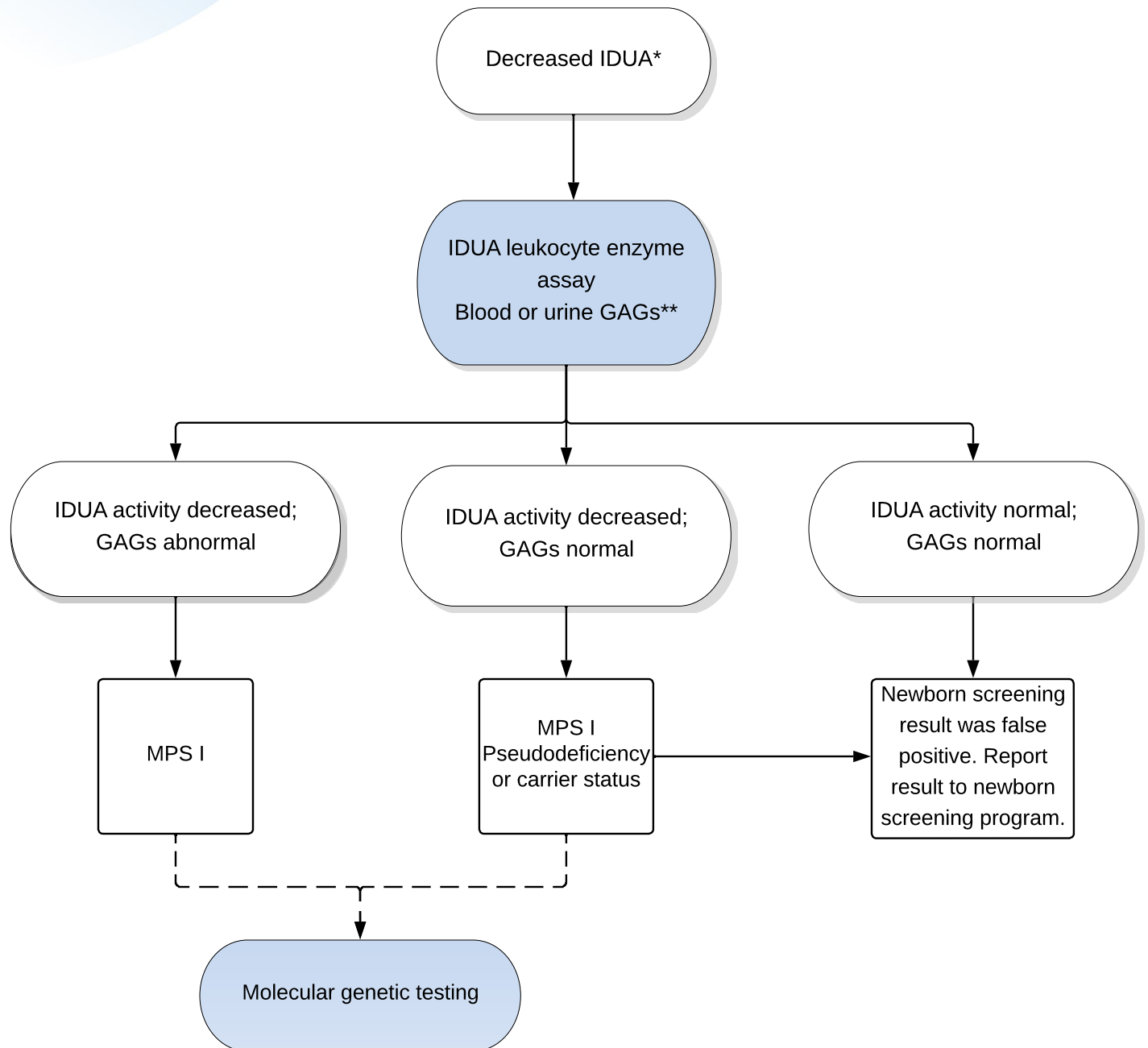


## MPS I: Decreased Alpha-L-Iduronidase; Elevated Dermatan and Heparan Sulfates\*



### Key

- Actions are shown in shaded ovals; results are in the unshaded ovals. Diagnostic outcomes are shown in boxes.
- Dashed line reflects an optional test.
- \*Heparan and dermatan sulfates (GAGs) not measured by all screening programs.
- \*\*Serum, urine, or dried bloodspots.

### Abbreviations:

IDUA = alpha-L-Iduronidase  
 GAGs = glycosaminoglycans  
 MPS I = Mucopolysaccharidosis Type I