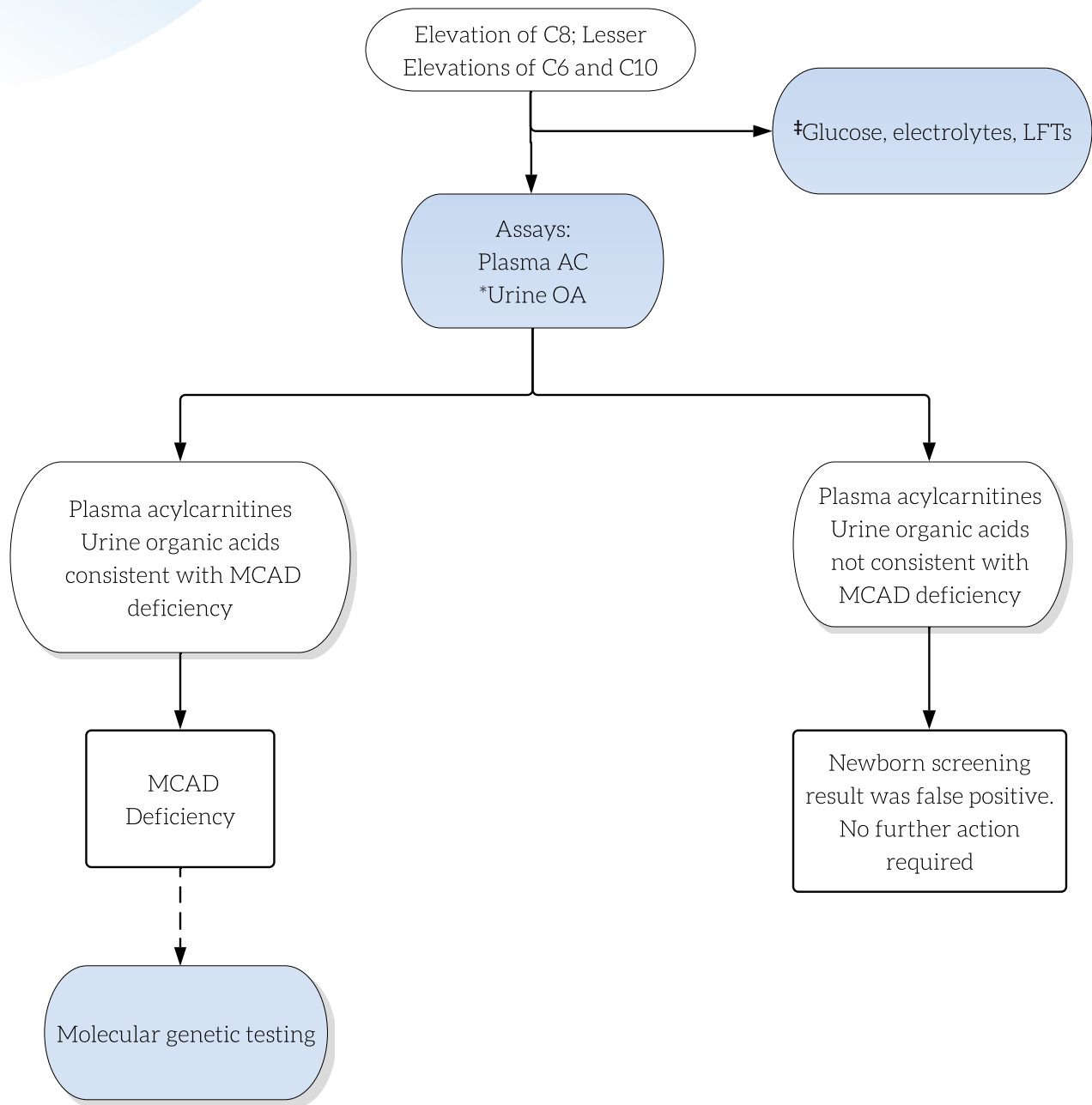


C8 Elevated + Lesser Elevations of C6 and C10*



Key

- Actions are shown in shaded ovals; results are in the unshaded ovals. Diagnostic outcomes in boxes.
- Dashed line reflects an optional test.
- ‡May be performed locally as a rapid screen to assess severity.
- *OA must include identification of hexanoylglycine.
- *C6 and C10 if reported .

Abbreviations

AC = acylcarnitine
 LFTs = liver function tests
 MCAD = Medium-chain acyl-CoA dehydrogenase
 OA = organic acid