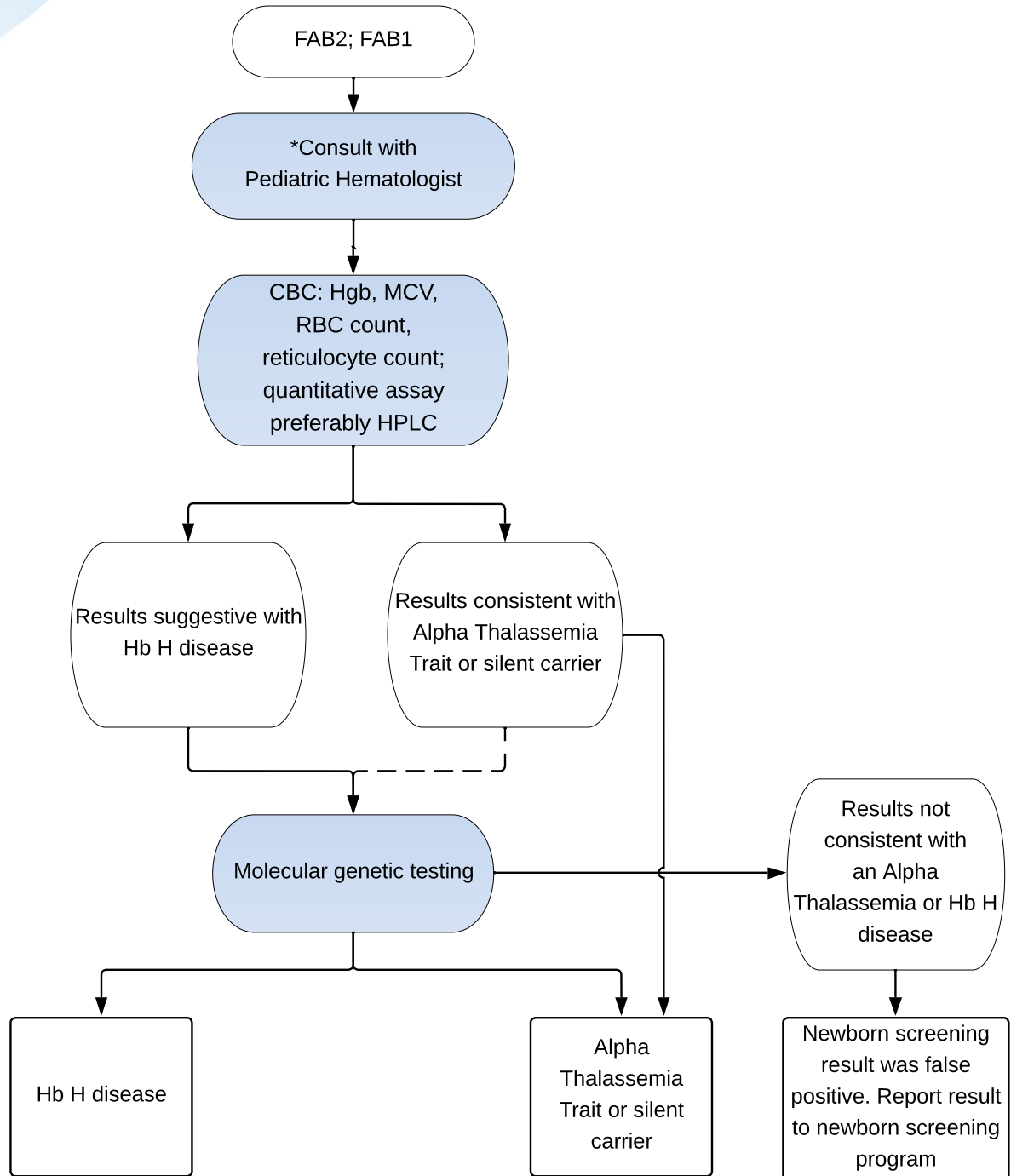


Hemoglobin FA + Barts:

Low/Moderate Barts Alpha Thalassemia Screening Result (FAB2; FAB1)



Key

- Actions are shown in shaded ovals; results are in the unshaded ovals.
- Diagnostic outcomes are shown in boxes.
- Dashed line reflects an optional test.

***Barts levels decrease rapidly after birth and vary significantly depending on time of collection and methodology. Diagnostic specificity varies widely between NBS programs. It is essential to work with the State Health Department, thalassemia specialist, and/or genetic counselor on a detailed interpretation and response.**

Abbreviations

CBC = complete blood count
 Hb = hemoglobin protein
 HbH = Hemoglobin H disease
 Hbg = hemoglobin level
 HPLC = high performance liquid chromatography
 MCV = mean corpuscular volume
 RBC = red blood cell