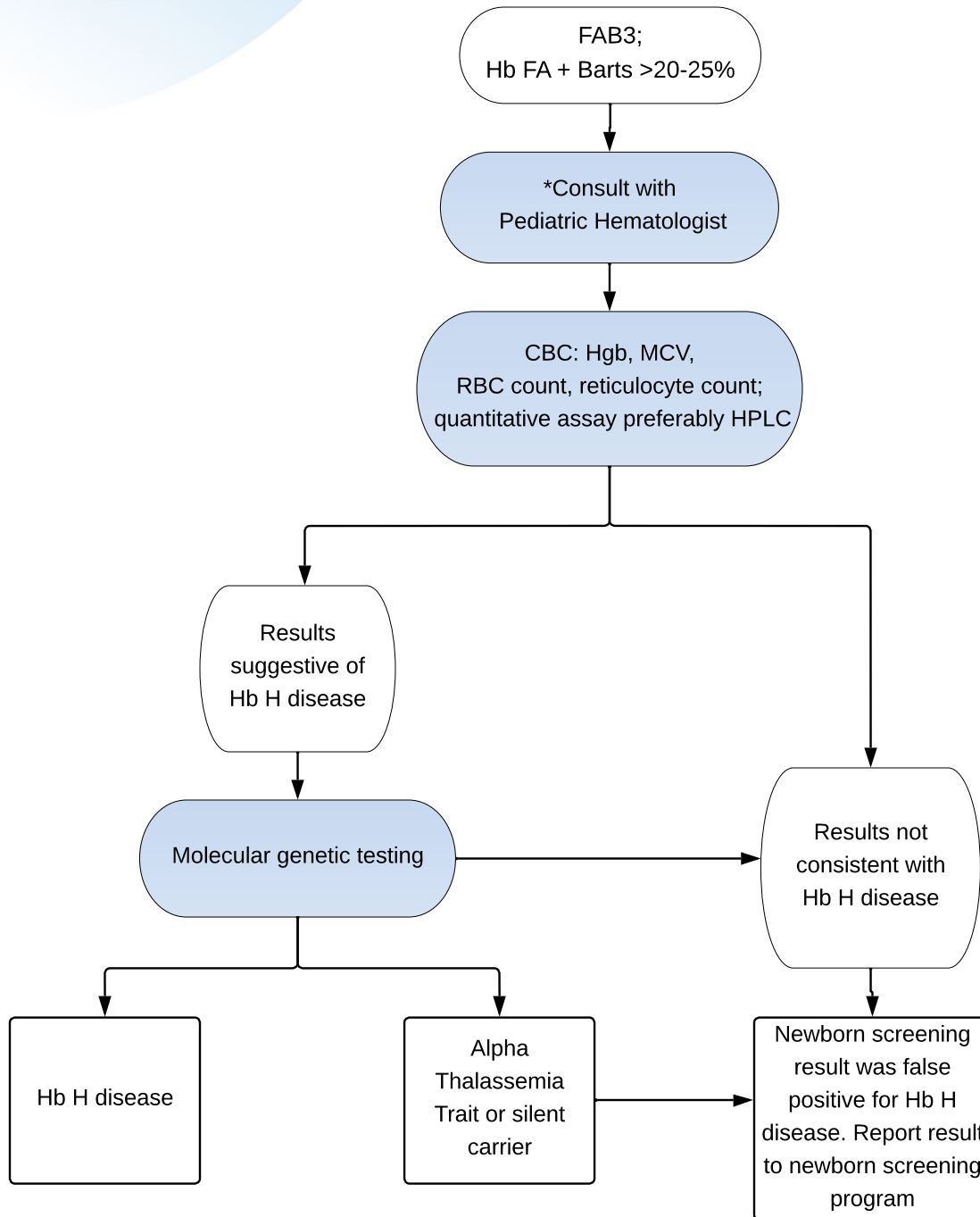


# Hemoglobin FA + Barts:

## High Barts Alpha Thalassemia Screening Result (FAB3; FA + Barts > 20-25%)



### Key

- Actions are shown in shaded ovals; results are in the unshaded ovals.
- Diagnostic outcomes are shown in boxes.
- Dashed line reflects an optional test.

**\*Barts levels decrease rapidly after birth and vary significantly depending on time of collection and methodology. Diagnostic specificity varies widely between NBS programs. It is essential to work with the State Health Department, thalassemia specialist, and/or genetic counselor on a detailed interpretation and response.**

### Abbreviations

CBC = complete blood count  
 Hb = hemoglobin protein  
 Hb H = Hemoglobin H disease  
 Hgb = hemoglobin level  
 HPLC = high performance liquid chromatography  
 MCV = mean corpuscular volume  
 RBC = red blood cell